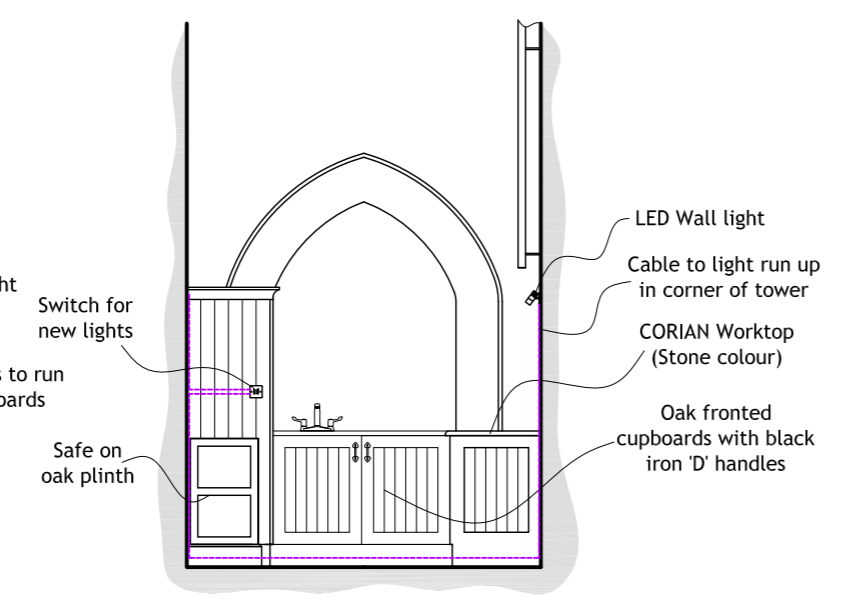
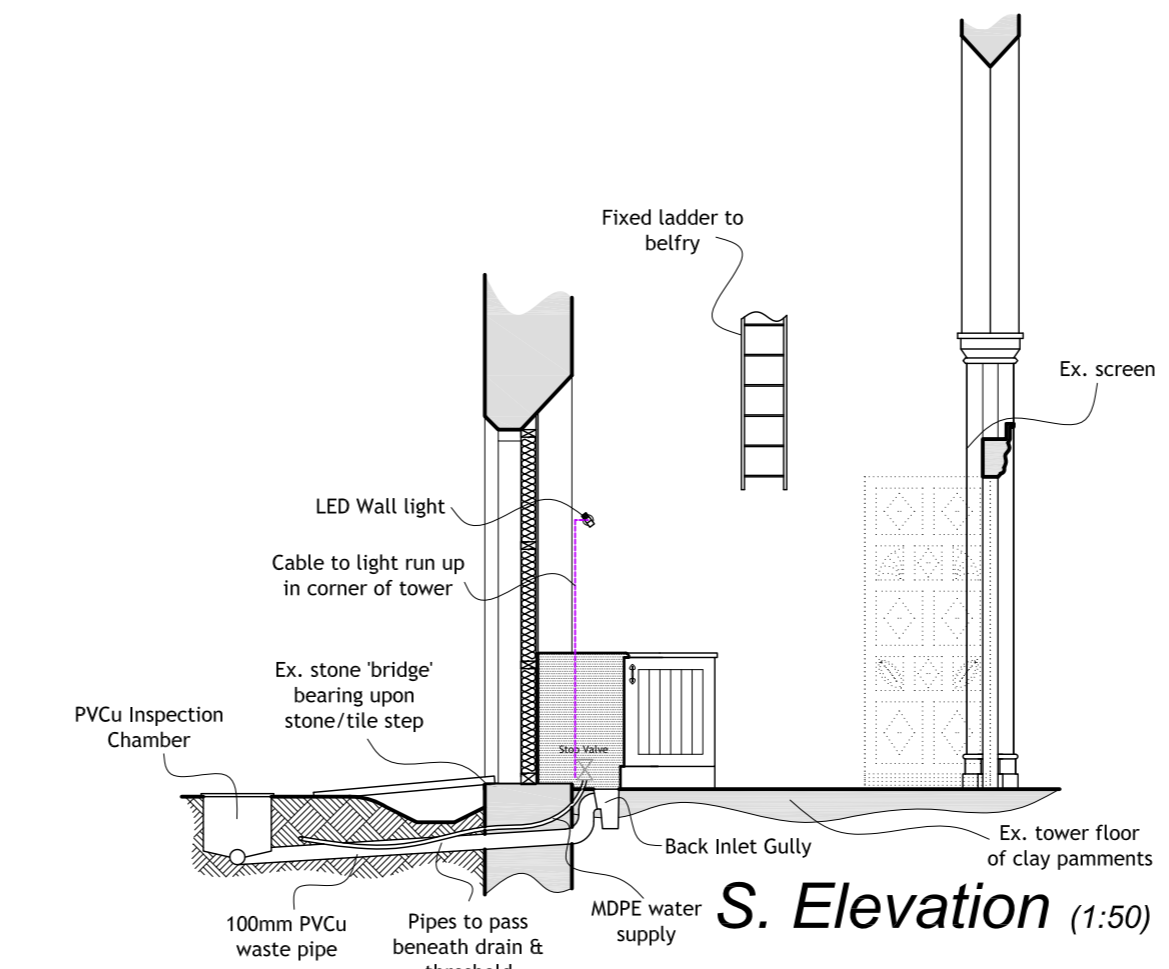


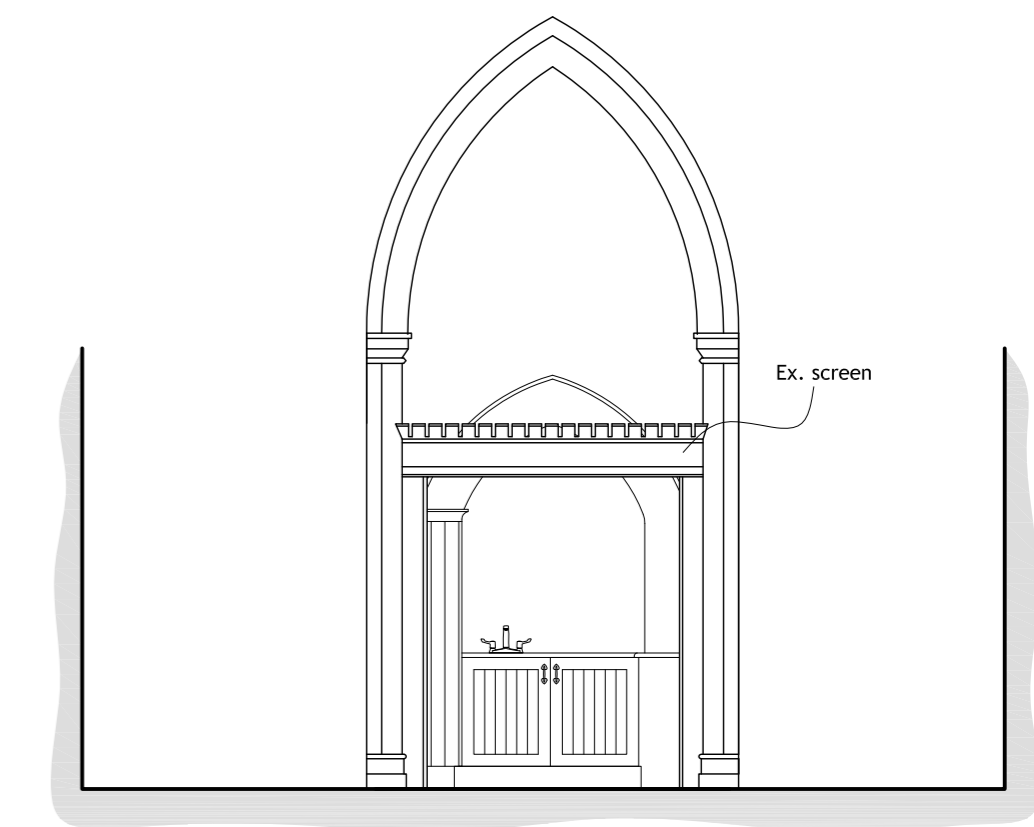
N Elevation (1:50)



E Elevation (1:50)



S Elevation (1:50)



Elevation from Nave (1:50)

GUIDANCE NOTES.

- Floor finishes are to remain unaltered.
- Electrical and plumbing arrangements to be designed and installed by approved specialist contractors to satisfy codes of practice and regulations laid down by IEE, Institute of Heating and Plumbing Engineers and local bylaws or authorised specification.
- The use and installation of all materials, goods and equipment and the preparation for and the use of decorative applications to be strictly in accordance with manufacturers recommendations and limitations irrespective of any notes contained upon this drawing.
- This drawing is only for use in conjunction with the site referred to and contained upon the location plan.

DRAINAGE.

Inspection Chambers:- patent, lightweight, PVCu units installed in accordance with manufacturer's instructions.

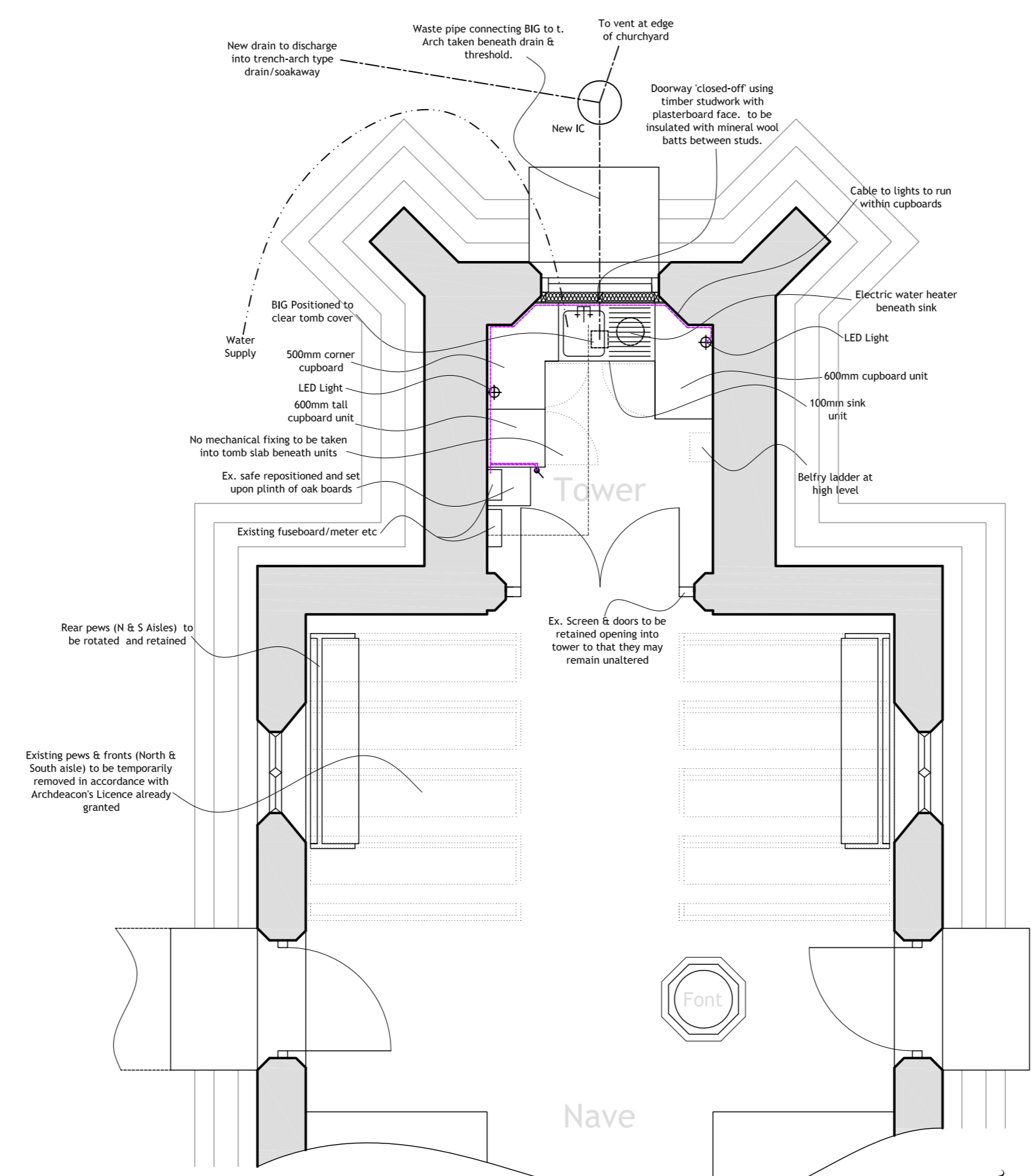
Foul Drains:- to be 100mm diameter PVCu pipes laid to (max.) 1:40 falls and to connect into Trench Arch type drain located within church yard. LOCATION OF TRENCH ARCH & ROUTE / DEPTH OF DRAINAGE TO BE CONFIRMED AND AGREED ON SITE PRIOR TO ANY EXCAVATION - SEE PROVISIONAL LOCATION ILLUSTRATED ON SITE PLAN DWG. 2/380/3C

Internal Drainage:- provide anti-syphonic traps and waste outlets of the following sizes:- sink.....38mm waste, 75mm trap. All appliances to connect into back inlet gully as shown on plan.

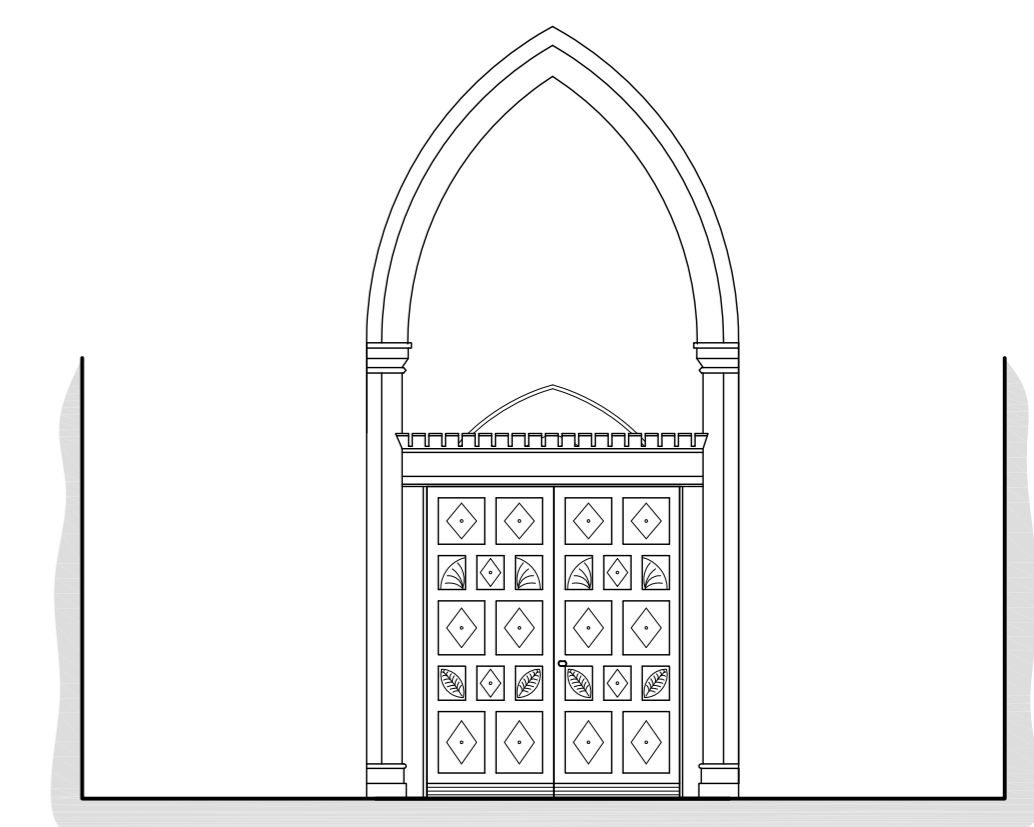
ADDITIONAL INFORMATION.

Heating (Water):- Provide electrically operated point-of-use water heater beneath flower sink.

Lighting:- New lighting to comprise of lamps with an luminous efficiency greater than 40 lumens per circuit-watt e.g. fluorescent tubes or compact fluorescent lamps. GLS tungsten lamps with bayonet or Edison screw bases are not to be used.



Proposed Plan (1:50)



Elevation from Nave (1:50)

E. Lighting shown, minor alterations made	DCRW	04.03.16
D. Minor alterations to layout of scheme.	DCRW	18.12.15
C. Elevations added	DCRW	03.10.14
B. Layout and size of units revised.	DCRW	02.09.14
A. Arrangement of kitchen adjusted.	DCRW	16.07.14

RICHARD C.F. WAITE ARCHITECT
 34 • Bridge • Street • Kings Lynn • Norfolk • Tel: (01553) 772656

Proposed alterations to provide Kitchen facilities to St. Andrew's Church, Congham.
Proposed Plans - Tower Kitchen

Paper Size: A2	2/380/4E
Drawn: DCRW	
Date: June '14	

This drawing is subject to amplification from further construction information. Any discrepancy found on drawing to be notified to Architect immediately. All foundations to be modified to suit ground conditions & structural requirements after site investigation by others. No dimensions or sizes to be scaled from this drawing. All sizes or dimensions to be checked before construction. This drawing is copyright & must not be copied without consent.

