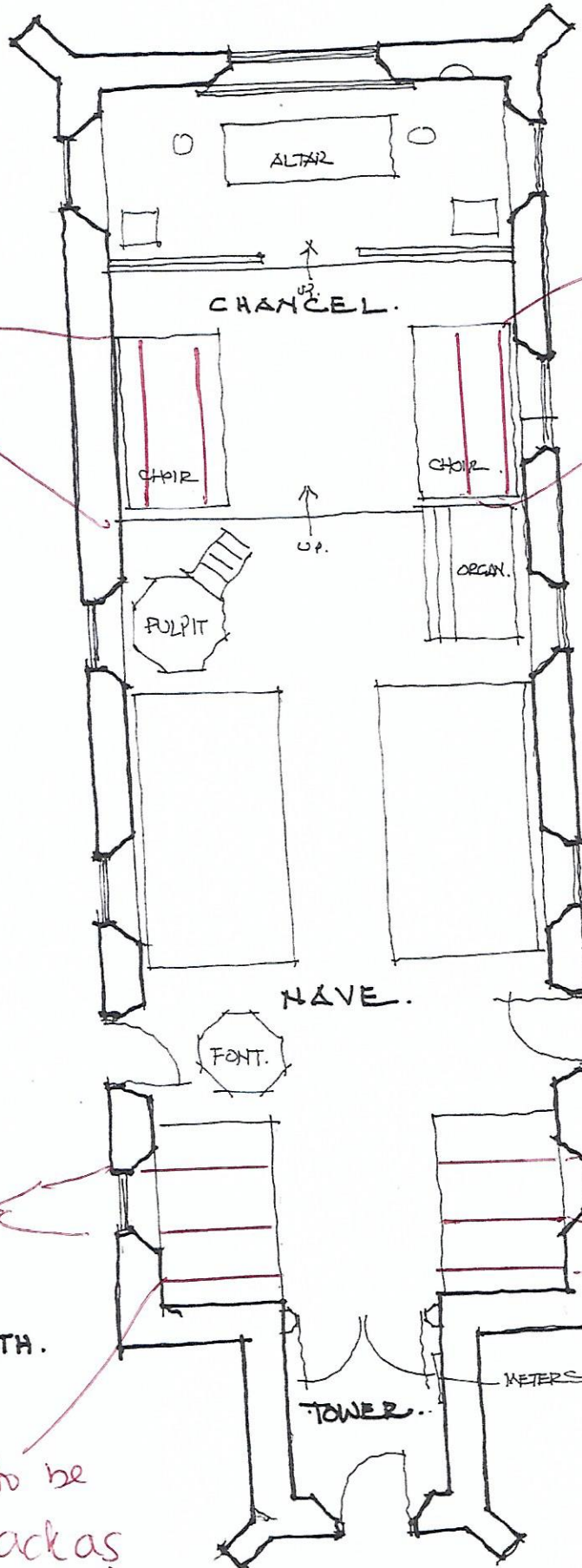


ST. ANDREW'S CHURCH CONGHAM.

GENERAL PLAN.

APPROX SCALE 1/100.
DATE 20.05.98.
DRAWN BY RCFW.

RICHARD C.F. WAITE ARCHITECT.
34 BRIDGE STREET KING'S LYNN.
PE30 5AB. 0553 772656.



2 choir pews to be temporarily removed

2 choir pews to be temporarily removed

2 pews to be moved to replace choir pews

2 pews to be moved to replace choir pews

Rear pew to be moved back as far as possible

Rear pew to be moved back as far as possible